

5-MB



Single Wire Cheese Slicing



FOODTOOLS
Industry Leaders in Portion Control

5-MB

Average Speed:

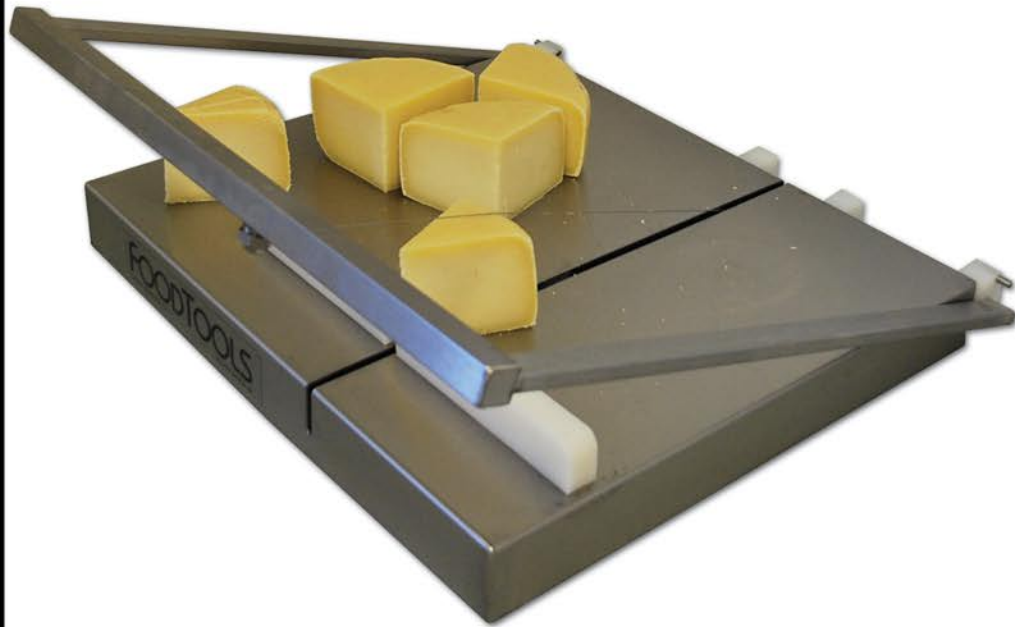
Typically Under 1 Minute Per Product Cycle

Function:

This model is a tabletop single wire machine operated by human power with a lever arm to slice up to 40 lb blocks of cheese or butter into smaller portions. An entire 40 lb block can be cubed on this machine by cutting the block into columns in one direction and then cutting the other direction to cut cubes. This machine is a great addition to any bakery breaking down butter blocks for ingredients or any cheese operation starting with blocks or wheels of cheese and breaking them down into smaller portions.

Benefits

- Achieve a return on investment through labor savings and improved portion quality and consistency
- Stainless steel assembly is heavy duty and easy to clean
- Small and compact tabletop design is perfect for locations with limited space
- Reliable and durable equipment backed by manufacturer's warranty



Single Wire Cheese Slicing

www.foodtools.com

FoodTools Corporate Office

Santa Barbara, CA U.S.A.
805.962.8383
877.836.6386

FoodTools Central

South Haven, MI U.S.A.
269.637.9969
800.644.2377

FoodTools United Kingdom

Ongar, Essex U.K.
44.1277.364869

FoodTools Asia

Zhuhai, Guangdong China
86.756.2127528

sales@foodtools.com



FOODTOOLS
Industry Leaders in Portion Control



Power:

Lever Arm Human Power

Product Size Ranges:

40 lb (18 kg) block, 12 in (30.5 cm) Tall

Portion Size Ranges

Depends On Product

FoodTools machines are manufactured with heavy duty anodized aluminum, stainless steel, and ultra-high molecular weight plastic. The equipment is designed for complete wash down requirements in production facilities.

Specifications are subject to change and are dependent on the product portioned or additional accessories to standard equipment.

© FoodTools - 11/2019